



# Setting the scene for co-creating Citizen Science Hubs

V.G. Psomiadis, A. Bakousi, I. Tavantzis, K. Karatzas, A. Vakali, A. Mazaris, E. Stylianidis  
Aristotle University of Thessaloniki, Thessaloniki, Greece



## Citizen Science Hubs

### CITIZEN SCIENCE HUBS

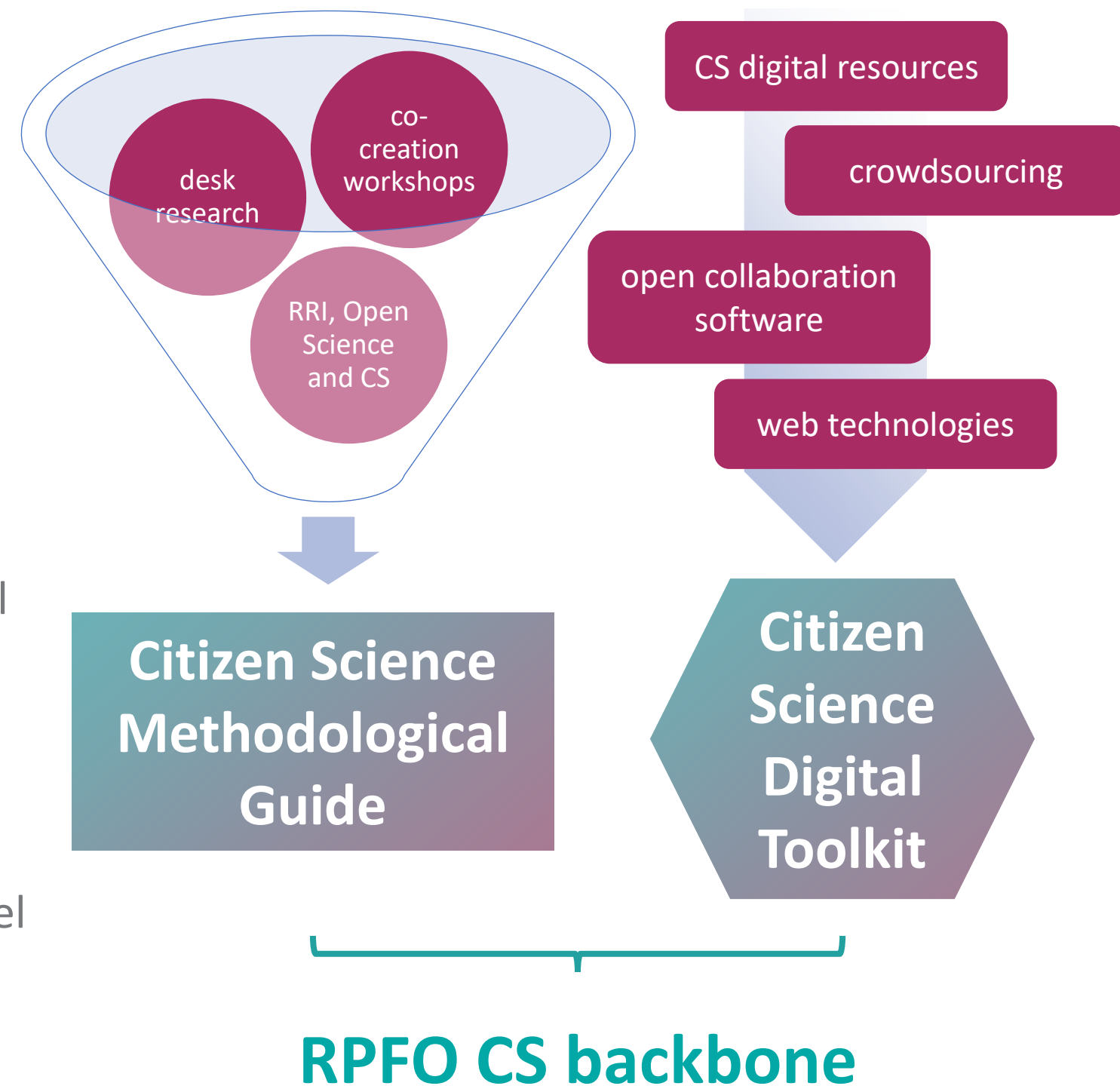
Citizen Science Hubs (CSHs) based in Research Performing and Funding Organisations (RPFOs) seek to **empower stakeholders to co-create new knowledge** in a transdisciplinary way, **forge new interactions** and **ground Responsible Research and Innovation (RRI)** in society

### Supporting the setup and operation of Citizen Science Hubs

An integrated **methodological guide** supported by a **digital toolkit** that distills existing knowledge and aggregates resources towards **institutionalising** and **incorporating** Citizen Science (CS) within RPFOs in a systematic way.

#### CSHs established in RPFOs:

- ✓ Stimulate excellent Citizen Science with engaged roles for all research & innovation stakeholders in line with RRI principles
- ✓ Incubate and support relevant activities
- ✓ Provide a backbone of CS activities at regional and national level
- ✓ Act as a connecting point between the local quadruple helix stakeholders
- ✓ Raise public awareness and inspire by developments and trends at international level



RPFO CS backbone

## Methodological Guide

### Technical Implementation

- Establishment procedures
- Ethics & diversity aspects
- Funding aspects
- Administration support
- Main objectives
- Physical & virtual presence

### Activities

- Research
- Awareness-raising & engagement
- Mutual learning and networking
- Capacity-building
- Monitoring and evaluation



- Step 1** Create a checklist of essential CSH components
- Step 2** Case study catalogue: good practices and activities proven to be successful
- Step 3** Pilot phase for running the CSH
- Step 4** Evaluation of steps 1-3
- Step 5** Improve, enrich, alter steps 1-3

## Digital Toolkit

### Citizen Science Hubs discussion forum

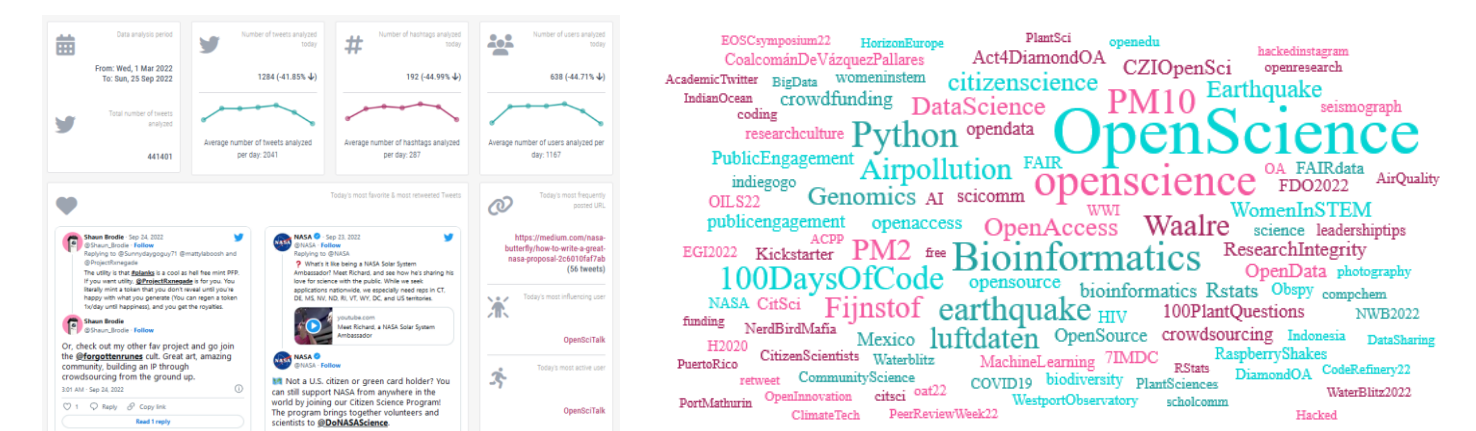
An open environment for exchanging good practices, mutual learning and nurturing novel ideas and solutions

### Citizen Science community insider

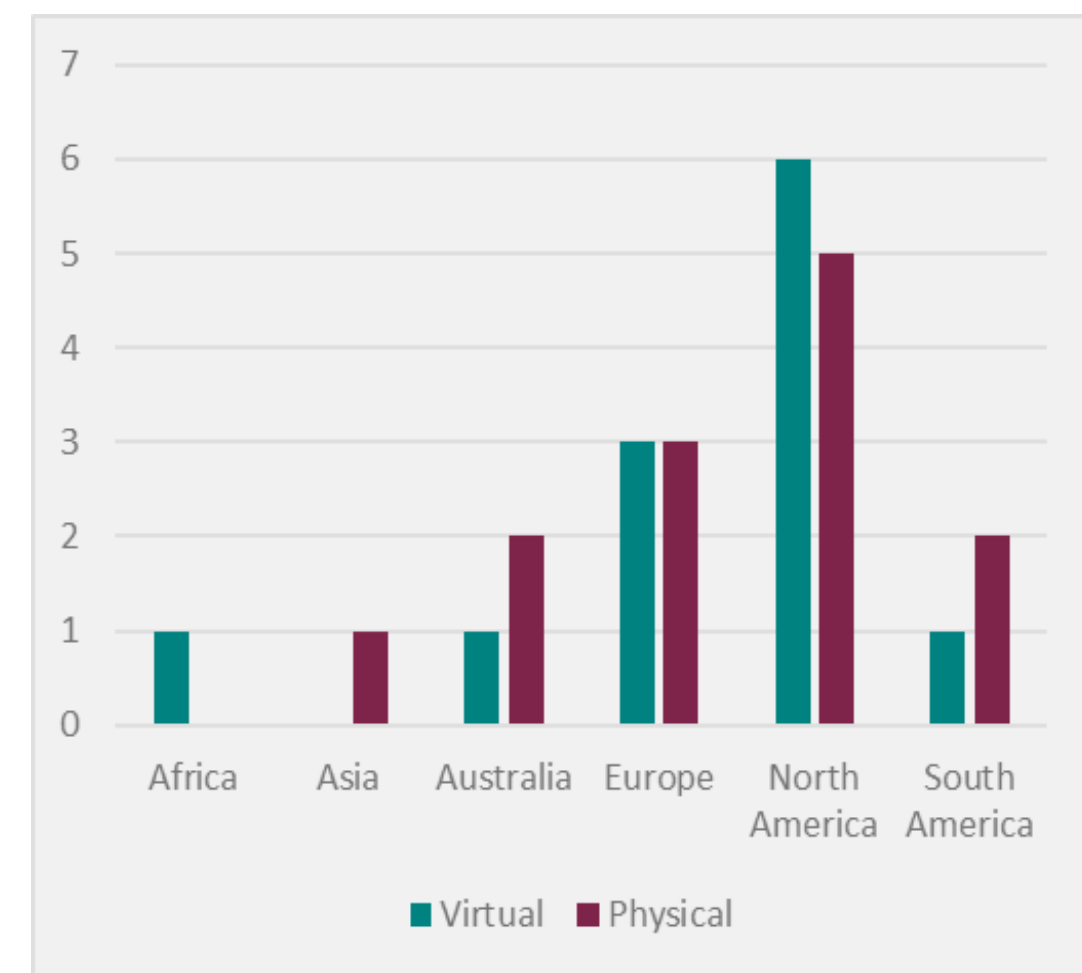
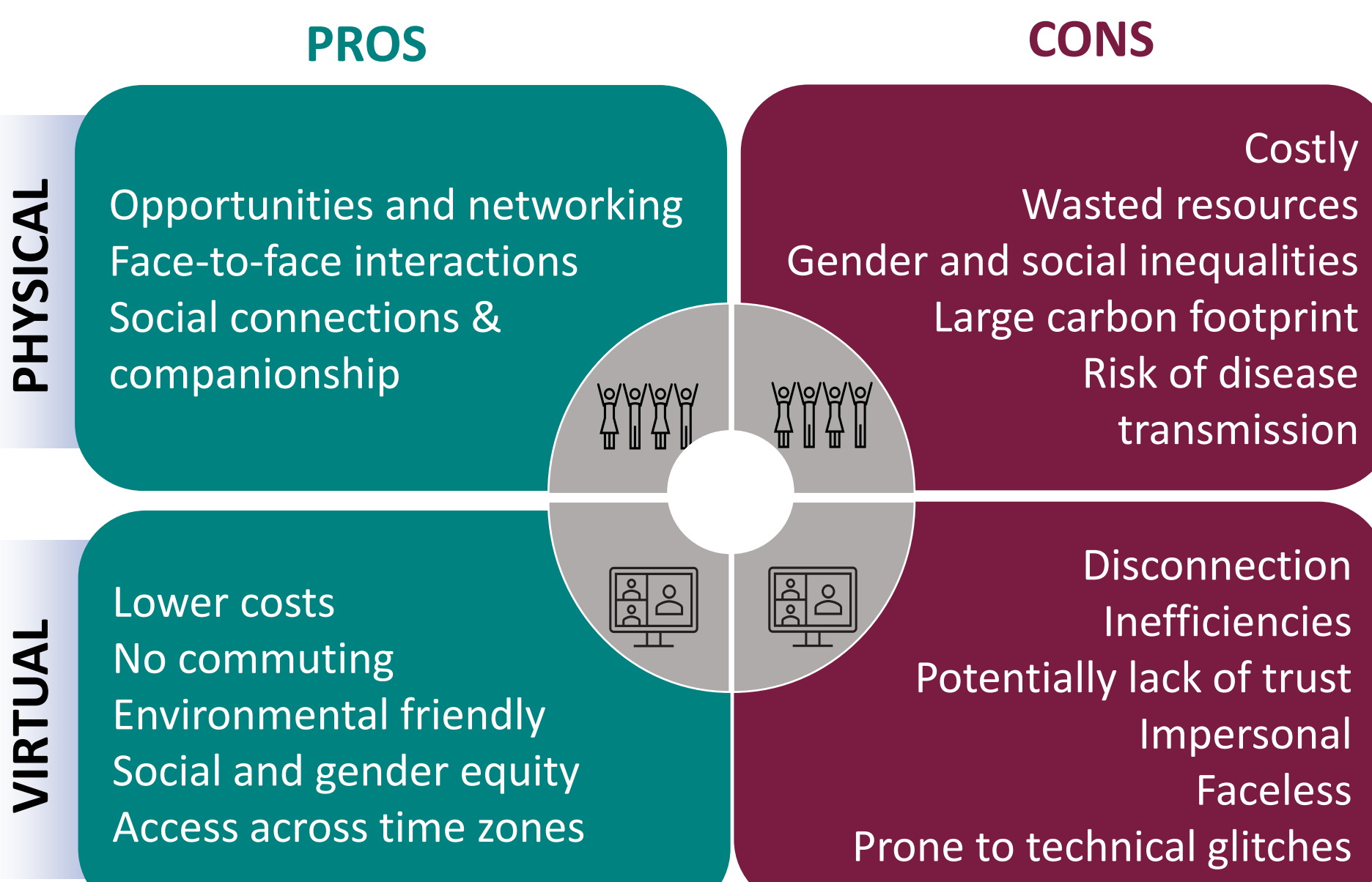
A dynamic collection of Citizen Science topics and latest developments to raise awareness and increase engagement

### Digital library of Citizen Science resources

A repository of public Citizen Science resources and tools developed by CSHs as well as other R&I stakeholders



## Virtual & Physical Presence



## Engagement Activities

### Considerations

- Citizens groups
- Level of stakeholders' influence on the activities
- Openness to the changeability of collaboration arrangements by the involved stakeholders
- Informal communication paths
- Types of engagement of the various stakeholders' determination
- Available tools
- Awareness of local community
- Community's needs and expectations
- Data policy

### Targets

- Stakeholder & new researchers' engagement
- Partnerships
- Scientists' capacity-building
- Literacy enhancing
- Knowledge exchange
- Networking
- Mobilizing the CSH community

## Open Challenges



### Operation

- Secure funding for CS projects
- Choose the right technical infrastructure and tools



### Engagement

- "Speaking the same language" as the citizens involved
- Active involvement and commitment of the policymakers



### Activities

- Maintain quality and impact
- Improve openness and transparency
- Strengthen learning and creativity
- Optimize organization, communication, and sustainability
- Establish suitable credits and rewards
- Develop ethical and legal procedures
- Balance between society and researchers
- Respond to needs of citizen scientists

## Achievements & Expectations

### INCENTIVE Step-by-step Setup Guide for Citizen Science Hubs

A methodological backbone guide for CSHs

- ✓ A step-by-step checklist to facilitate in the set-up and implementation phase of CSHs
- ✓ A case study catalogue to draw inspiration from for the set-up and running of future CSHs

### INCENTIVE Citizen Science Digital Toolkit

Resources to inspire & support CSHs

- ✓ A virtual asynchronous discussion space for serving the needs of CSHs and empowering CS stakeholders
- ✓ A crowdsourced online observatory for raising awareness and inspiring grass-rooted invention and creativity
- ✓ An open directory for easy access to publicly available CS resources

### RESEARCH

- Good practices for CSH
- Integration of RRI keys to the processes of the CSH
- Scientific outcomes

### CITIZENS

- Number of activities that have affected the scientific skills and knowledge of the citizens
- Increasing number of actively involved citizens
- Researcher-Citizen cooperation assessment
- More citizen involvement per research stage

### HUBS

- Efficient support for the establishment and further growth of a CSH
- Attract, engage and sustain stakeholders around the Hubs ecosystems

